

Name: \_\_\_\_\_

# Bodies of Water



## WATERFALL

A waterfall is a river or other body of water's steep fall over a rocky ledge into a plunge pool below.



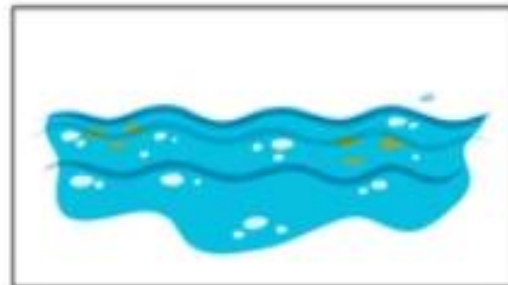
## POND

A pond is an area filled with water, either natural or artificial, that is smaller than a lake.



## RIVER

A river is a natural flowing watercourse, usually freshwater, flowing towards an ocean, sea, lake or another river.



## OCEAN

The ocean is a huge body of saltwater that covers about 71 percent of the Earth's surface.



## LAKE

a large body of water surrounded by land.



## WETLAND

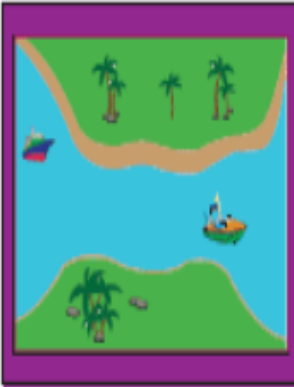
The ocean is a huge body of saltwater that covers about 71 percent of the Earth's surface.

Name: \_\_\_\_\_

## Bodies of Water



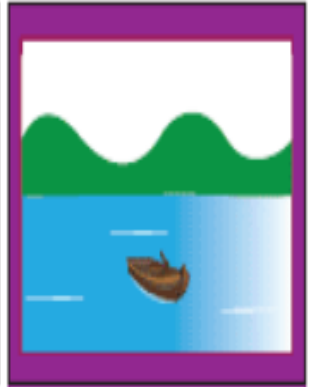
waterfall



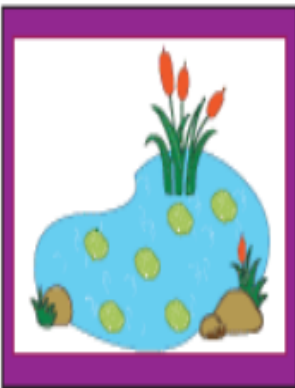
strait



ocean



lake



pond



river



bay



wetland

Additional Lap book cut outs

**Rivers**

**Oceans**

**Lakes**

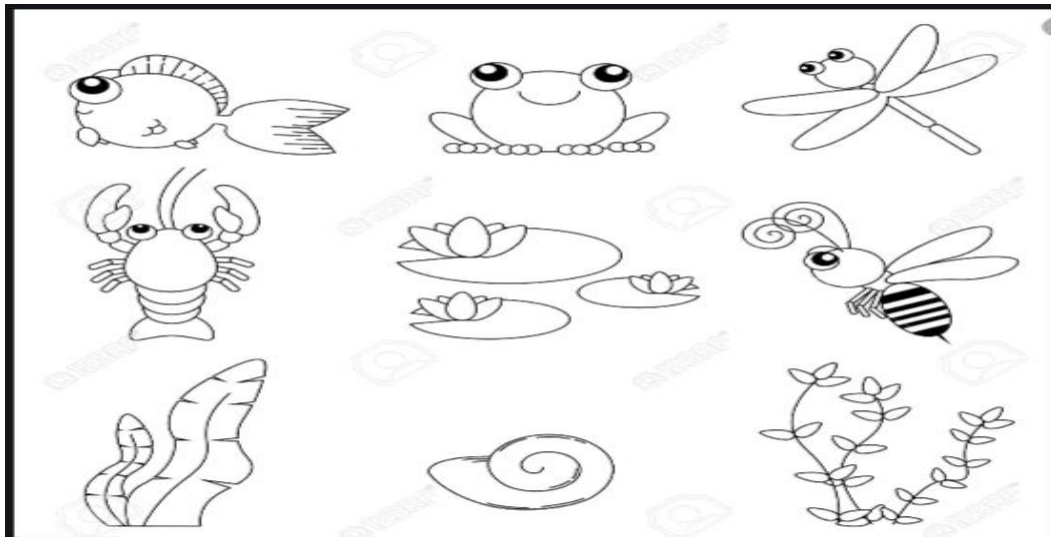
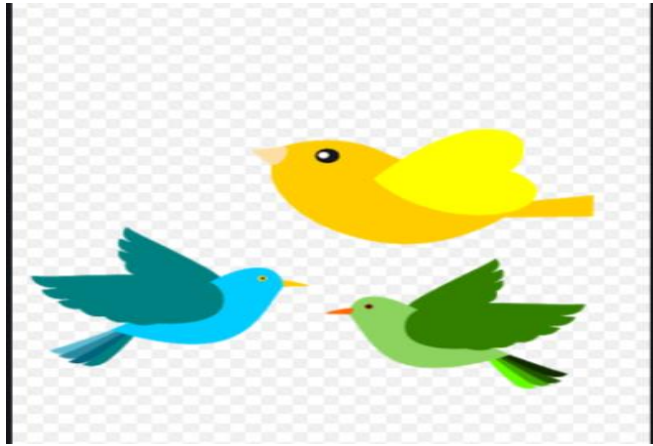


**My  
Bodies of  
Water  
Mini Lap  
Book**

Ocean Craft – Jonah and the Whale – You will need a large paper plate

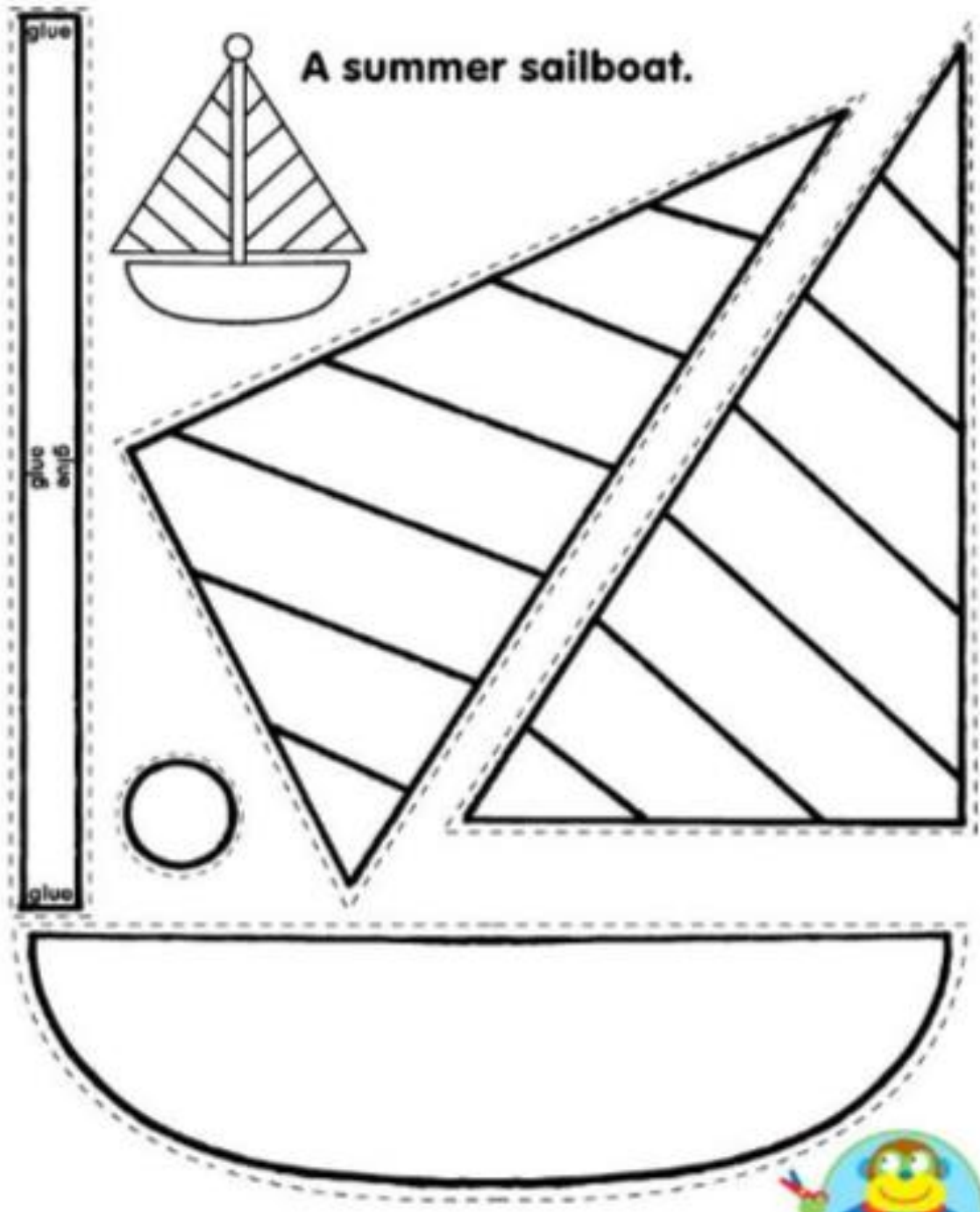


**River Craft – Baby Moses in the river - You will need an A4 card for this craft – Add creatures and picture of baby Moses to your river scene.**





**Lakes – Sea of Galilee** – Cut out the parts and colour to make a sail boat; cut out characters to place in the boat; cut and stick out waves; you will need A4 card landscape.



Cut out the men from this picture ( to stick in your boat above)



Jesus calms the storm